

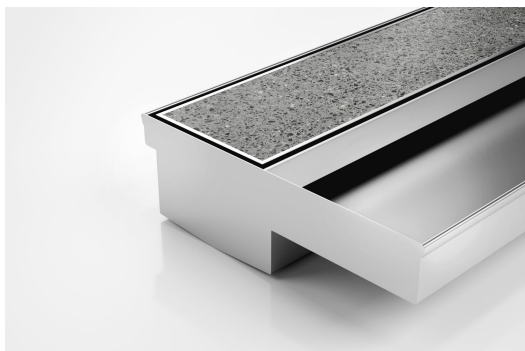


ARCHITECTURAL
GRATES + DRAINS

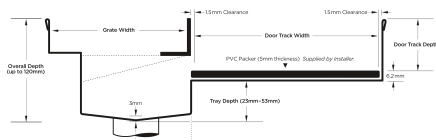


100TiTDiS

Threshold with Sill



Code 100TiTDiS
Range Threshold
Grate Style Ti
Category Made-to-Length
Channel Material Stainless Steel
Steel Grade 316



Grates longer than 1500mm supplied in sections. Tile Inserts longer than 1200mm supplied in sections. Channels over 3000mm supplied in sections with joiner. +/-2mm tolerance on dimensions.

The 100TiTDiS is a Threshold Drain for door track only applications featuring our 100mm wide Tile Insert.

For sliding and Hinged doors.

A threshold drain for sill usage only featuring a concealed channel section system with an integrated sill suitable for all door track types.

Allows door sills to be drained while having internal and external floor surfaces with no step down.

Suitable for tiles up to 12mm thick.

Please be aware that depending on the installation environment, for a pool installation or close to a surf beach, you may need to have your stainless steel grates electropolished.

SPECIFICATIONS + DIMENSIONS

Channel Width	110mm
Channel Depth	Adjustable
Length(s)	As Required
Outlet Size	N/A

STORMTECH COLOUR FINISHES



Electroplate finishes subject to natural variation with time and local environment. Factors such as pools/surf beaches may require electropolishing. Contact us for suitability.

PRODUCT APPLICATIONS

Aged / Health Care Drainage Suspended Slab Drainage
 Balcony Drainage
 Commercial Drainage
 Multi-Residential Drainage
 Special Needs Drainage
 Threshold Drainage



Copyright © Stormtech Pty Ltd. Patent 733361. Drawings not to scale, please use dimensions shown.
 Downloaded 02/07/2025 (please check for updates)

Visit **stormtech.com.au**
 for tools + inspiration.

Phone **1300 653 403**

Email **info@stormtech.com.au**