

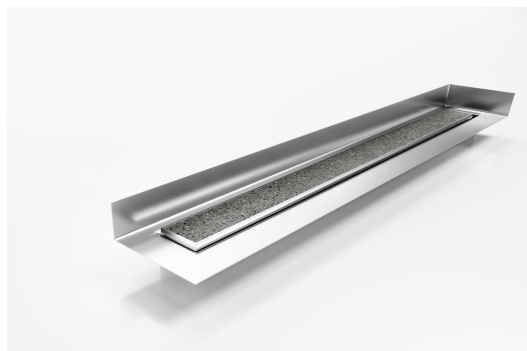


ARCHITECTURAL
GRATES + DRAINS



65TiiMTLF

Linear Drain with Tile Flange



Tile Insert drain with a custom channel with tile flange. Suitable for tiles up to 20mm thick.

The F Series features a custom made flange for floor and walls combined with a choice of grate or tile insert from Stormtech's superb designer range.

Stormtech's range of architectural grates and drains with tile flanges are designed to solve the complexities of today's building requirements

Custom made to suit your range requirements; including custom built flange ledge to suit your tile depth, outlet size and channel position.

Code 65TiiMTLF

Range 65

Grate Style Ti

Category Made-to-Length

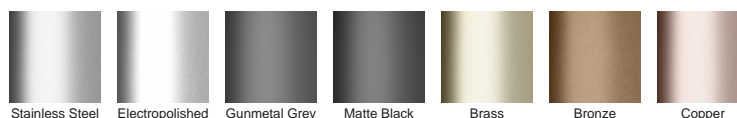
Channel Material Stainless Steel

Steel Grade 316

SPECIFICATIONS + DIMENSIONS

Channel Width	65mm
Channel Depth	42mm
Length(s)	As Required
Outlet Size	DN40, DN50, DN65

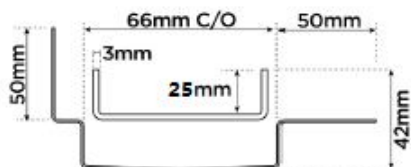
STORMTECH COLOUR FINISHES



Electroplate finishes subject to natural variation with time and local environment. Factors such as pools/surf beaches may require electropolishing. Contact us for suitability.

PRODUCT APPLICATIONS

Bathroom Drainage	Shower Drainage
Aged / Health Care Drainage	Multi-Residential Drainage
Balcony Drainage	Special Needs Drainage
Commercial Drainage	Threshold Drainage
Hospitality Drainage	Suspended Slab Drainage
Paved Area Drainage	Wet Area Drainage



Grates longer than 1500mm supplied in sections. Tile Inserts longer than 1200mm supplied in sections. Channels over 3000mm supplied in sections with joiner. +/-2mm tolerance on dimensions.

Copyright © Stormtech Pty Ltd. Patent 733361. Drawings not to scale, please use dimensions shown.
Downloaded 01/07/2025 (please check for updates)



Visit **stormtech.com.au**
for tools + inspiration.

Phone **1300 653 403**

Email **info@stormtech.com.au**