

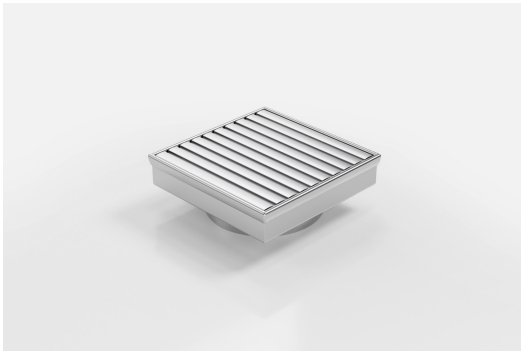


ARCHITECTURAL  
GRATES + DRAINS



# SQ100AADN80

## Square Floor Waste



Square Floor waste with the exclusive Aluminium Wave design grate.

The Square Range of floor waste units allow the integration of a standard floor waste with Stormtech linear drainage.

Featuring a 316 marine grade Stainless Steel channel, the Square Range is available with all Stormtech grate designs and finishes.

**Available with 89mm, 76mm or 44mm outlet.**

**Code** SQ100AADN80

**Range** Square

**Grate Style** AA

**Category** Square Floor Waste

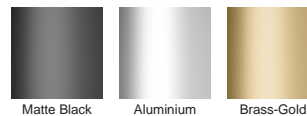
**Channel Material** Stainless Steel

**Steel Grade** 316

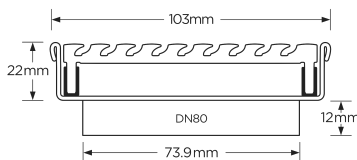
### SPECIFICATIONS + DIMENSIONS

<b>Channel Width</b>	104mm
<b>Channel Depth</b>	22mm
<b>Length(s)</b>	103mm
<b>Outlet Size</b>	DN80

### STORMTECH COLOUR FINISHES



Electroplate finishes subject to natural variation with time and local environment. Factors such as pools/surf beaches may require electropolishing. Contact us for suitability.



Grates longer than 1500mm supplied in sections. Tile Inserts longer than 1200mm supplied in sections. Channels over 3000mm supplied in sections with joiner. +/-2mm tolerance on dimensions.

### PRODUCT APPLICATIONS

Bathroom Drainage

Balcony Drainage

Commercial Drainage

Courtyard / Patio Drainage

Hospitality Drainage

Shower Drainage

Wet Area Drainage

Copyright © Stormtech Pty Ltd. Patent 733361. Drawings not to scale, please use dimensions shown. Downloaded 01/07/2025 (please check for updates)



Visit [stormtech.com.au](http://stormtech.com.au)  
for tools + inspiration.

Phone **1300 653 403**

Email [info@stormtech.com.au](mailto:info@stormtech.com.au)