

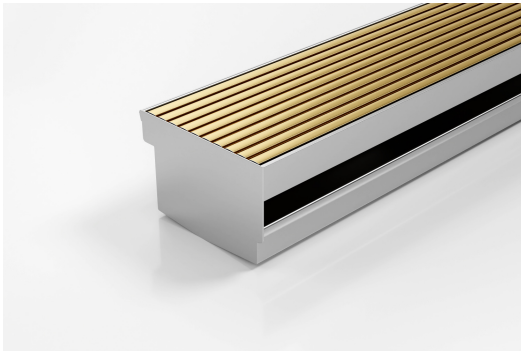


ARCHITECTURAL  
GRATES + DRAINS



# 100AATDi-BG

## Threshold with Sub-Sill



The 100AATDi-BG is a Threshold Drain for door track with sub sill tray featuring our 100mm wide Anodised Aluminium Wave grate in Brass-Gold finish.

For sliding and Hinged doors.

Featuring a linear stainless steel grate with concealed channel section connecting sill and sub-sill for door tracks and thresholds.

Allows door sills to be drained while having internal and external floor surfaces with no step down.

**Code** 100AATDi-BG

**Range** Threshold

**Grate Style** AA

**Category** Made-to-Length

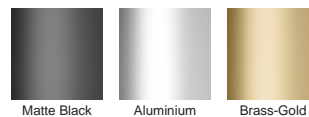
**Channel Material** Stainless Steel

**Steel Grade** 316

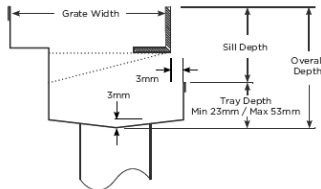
### SPECIFICATIONS + DIMENSIONS

<b>Channel Width</b>	110mm
<b>Channel Depth</b>	Adjustable
<b>Length(s)</b>	As Required
<b>Outlet Size</b>	N/A

### STORMTECH COLOUR FINISHES



Electroplate finishes subject to natural variation with time and local environment. Factors such as pools/surf beaches may require electropolishing. Contact us for suitability.



Grates longer than 1500mm supplied in sections. Tile Inserts longer than 1200mm supplied in sections. Channels over 3000mm supplied in sections with joiner. +/-2mm tolerance on dimensions.

### PRODUCT APPLICATIONS

Aged / Health Care Drainage      Suspended Slab Drainage  
Balcony Drainage  
Commercial Drainage  
Multi-Residential Drainage  
Special Needs Drainage  
Threshold Drainage

Copyright © Stormtech Pty Ltd. Patent 733361. Drawings not to scale, please use dimensions shown.  
Downloaded 01/07/2025 (please check for updates)



Visit [stormtech.com.au](http://stormtech.com.au)  
for tools + inspiration.

Phone **1300 653 403**

Email [info@stormtech.com.au](mailto:info@stormtech.com.au)